

ULJIN	ARR	120.875
		317.65
ULJIN	TWR	118.55
		317.45

ILS Z or LOC Z RWY 17

ELEV, ALT IN FEET
DIST IN NM
BRG ARE MAG
VAR 9° W

True North

LEGEND
ELEVATIONS
TINT
3500
3000
2500
2000
1500
1000
500
Sea Level
ELEVATIONS
ARE IN
FEET

SCALE 1: 400000
0 10 km
0 5 NM

MOA D8
8 000 AGL
GND

MOA 8
FL 400
11 000 AMSL
MOA 8
8 000 AMSL
3 000 AGL

RK R136
500 AMSL
GND

MOA 10
FL 400
10 000 AMSL

MOA 9W
FL 400
11 000 AMSL
MOA 9W
7 000 AMSL
3 000 AGL

MOA 9E
FL 400
11 000 AMSL
MOA 9E
10 000 AMSL
3 000 AGL

CATA 7H
5 000 AMSL
2 500 AGL
CATA 7L
2 500 AGL
2FC

(IF) UMNAE
Y
B

(SDF) TL041
5.0
261°
(252.7°T)

(IAF) ALDON
4.7
295°
(286.9°T)

LOC ONLY (FAF)
IUJS D5.7
36°52'20"N
129°25'30"E

LOC ONLY (SDF)
IUJS D4.1

LOC ONLY (MAPt)
IUJS D1.9

LOC 111.15
IUJS

(MAHF) BANYA

NOTE
1. RNAV 1 operation.
2. GNSS required.
3. ATIS surveillance service required.
4. DME required on an LOC approach.
5. Cross UMNAE at 220 kt IAS or less.

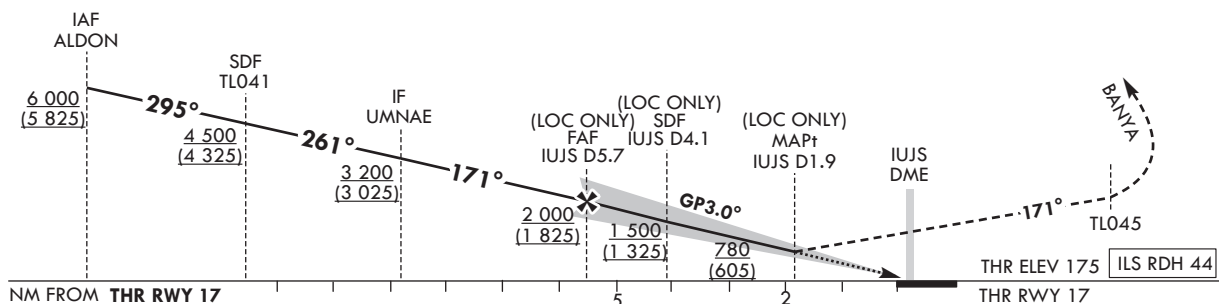
MSA 25 NM
ULJIN ARP

MAX, MNM ALT 6 000
MAX SPEED 230 kt IAS
1 MIN

MAX, MNM ALT 6 000
MAX SPEED 230 kt IAS
1 MIN

RECOMMENDED PROFILE(LOC ONLY)	DME IUJS	5	4	3	1.9
Final Approach Gradient 5.3%, 324 ft/NM	ALT(HGT)	1 783 (1 608)	1 459 (1 284)	1 136 (961)	780 (605)
		TRANSITION ALT		14 000	
		TRANSITION LVL		FL 140	

Climb straight ahead until TL045 then turn left to BANYA and hold at 6 000 ft.



OCA (H)		A	B	C	D		Knots	60	90	120	150	180
Straight-in Approach	CAT-I	375 (200)				Rate of descent	V/V fpm	318	478	637	796	955
	LOC	780 (605)				* Timing NOT authorized for defining the MAPt.						
						* Circling not authorized.						

OFFICE OF CIVIL AVIATION

AIRAC AIP AMDT 12/24
Effective : 1600UTC 22 JAN 2025

AERONAUTICAL DATA TABULATION

ILS Z / LOC Z Approach to RWY 17 from ALDON(IAF)	
Fix/Point	Coordinates
ALDON(IAF)	36°56'46.3"N 129°35'23.0"E
TL041(SDF)	36°58'07.9"N 129°29'46.5"E
UMNAE(IF) BRG 171.28° / 10.17 NM IUJS	36°56'38.6"N 129°23'49.1"E
D5.7 IUJS(FAF LOC Only) BRG 171.29° / 5.70 NM IUJS	36°52'20.0"N 129°25'29.6"E
D4.1 IUJS(SDF LOC Only) BRG 171.27° / 4.10 NM IUJS	36°50'50.7"N 129°26'04.2"E
D1.9 IUJS(MAPt LOC Only) BRG 171.27° / 1.90 NM IUJS	36°48'44.5"N 129°26'53.2"E
THR RWY 17 Final approach descent angle(LOC ONLY) 3.03° (FAF-SDF) / 3.05° (SDF-THR)	36°47'05.09"N 129°27'31.62"E
TL045	36°41'52.3"N 129°29'32.6"E
BANYA	36°40'12.4"N 129°40'05.8"E

INSTRUMENT APPROACH CHART - ICAO

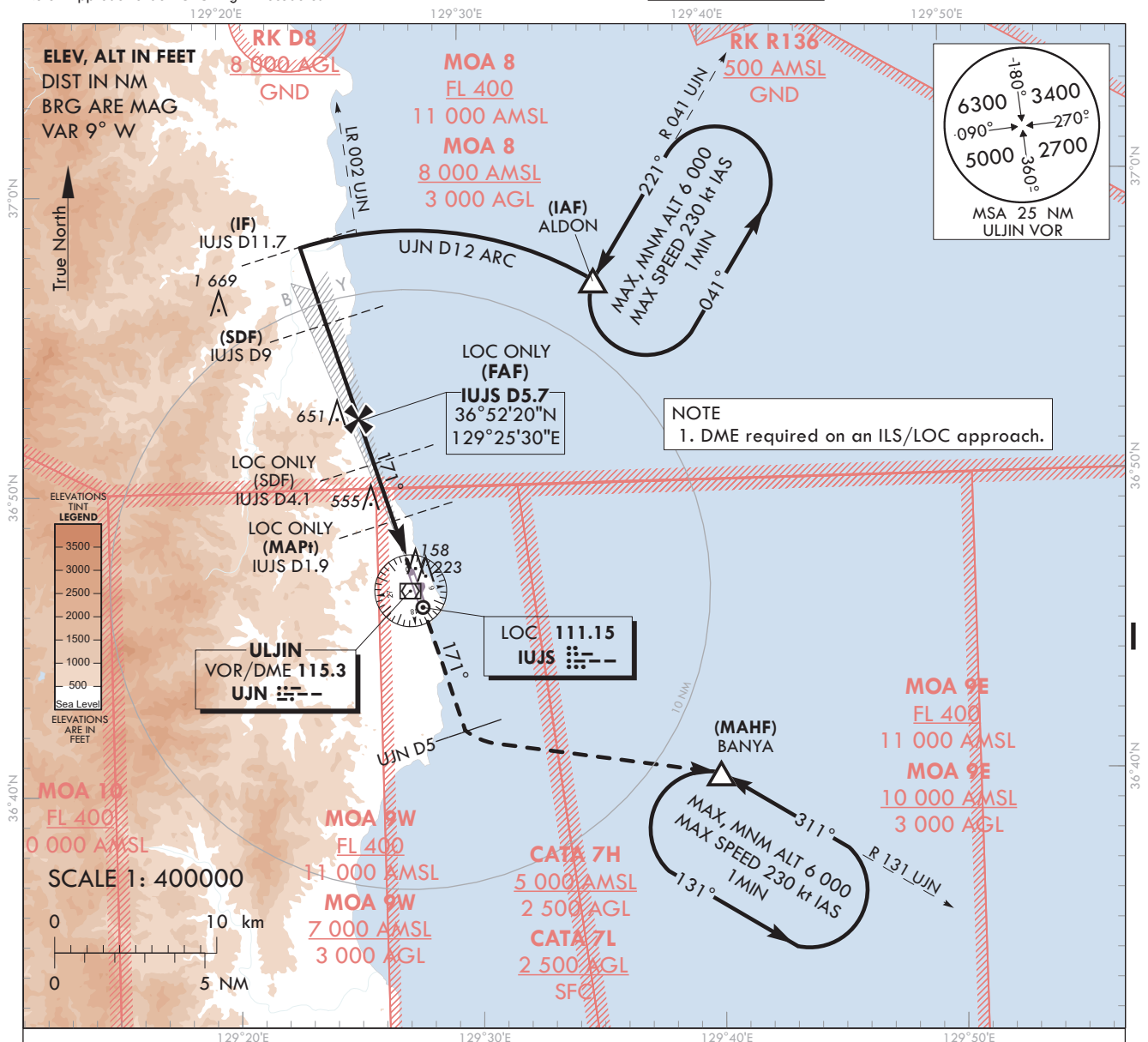
Note : Approach under ICAO Flight Procedures.

AERODROME ELEV 175 ft
HEIGHTS RELATED TO
THR RWY 17 - ELEV **175 ft**

ULJIN	ARR	120.875
		317.65
ULJIN	TWR	118.55
		317.45

ULJIN/Uljin(RKTL)

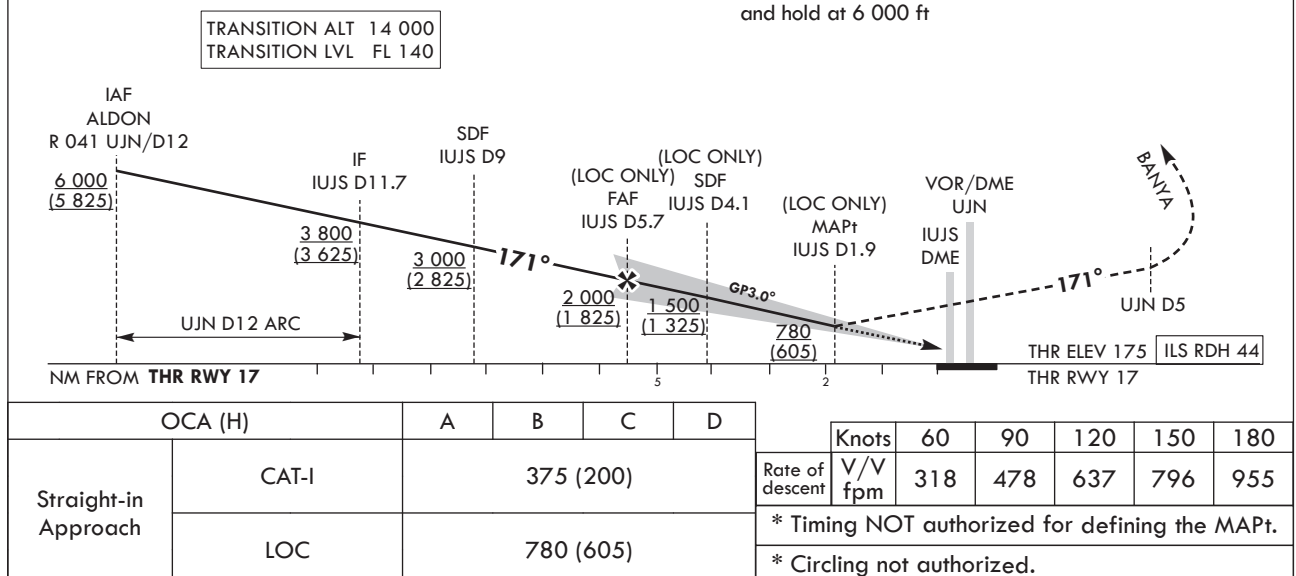
ILS Y or LOC Y RWY 17



RECOMMENDED PROFILE(LOC ONLY)	DME IUJS	5	4	3	1.9
Final Approach Gradient 5.3%, 324 ft/NM	ALT(HGT)	1 783 (1 608)	1 459 (1 284)	1 136 (961)	780 (605)

MISSED APPROACH

Climb straight ahead until UJN D5 then turn left to BANYA and hold at 6 000 ft



Change : Information of FREQ for LOC.

AERONAUTICAL DATA TABULATION

ILS Y / LOC Y Approach to RWY 17 from ALDON(IAF)		
	Fix/Point	Coordinates
ALDON(IAF)	R 041 UJN / 12.00 NM UJN	36°56'46.3"N 129°35'23.0"E
D11.7 IUJS(IF)	BRG 171.28° / 11.70 NM IUJS	36°58'06.9"N 129°23'14.8"E
D9.0 IUJS(SDF)	BRG 171.29° / 9.00 NM IUJS	36°55'31.8"N 129°24'15.1"E
D5.7 IUJS(FAF LOC Only)	BRG 171.29° / 5.70 NM IUJS	36°52'20.0"N 129°25'29.6"E
D4.1 IUJS(SDF LOC Only)	BRG 171.27° / 4.10 NM IUJS	36°50'50.7"N 129°26'04.2"E
D1.9 IUJS(MAPt LOC Only)	BRG 171.27° / 1.90 NM IUJS	36°48'44.5"N 129°26'53.2"E
THR RWY 17	Final approach descent angle(LOC ONLY) 3.03°(FAF-SDF) / 3.05°(SDF-THR)	36°47'05.09"N 129°27'31.62"E
UJN VOR/DME		36°46'35.2"N 129°27'26.9"E
D5 UJN	BRG 171.28° / 5.00 NM UJN	36°41'52.3"N 129°29'32.6"E
BANYA	R 131 UJN / 12.00 NM UJN	36°40'12.4"N 129°40'05.8"E

**INSTRUMENT
APPROACH
CHART - ICAO**

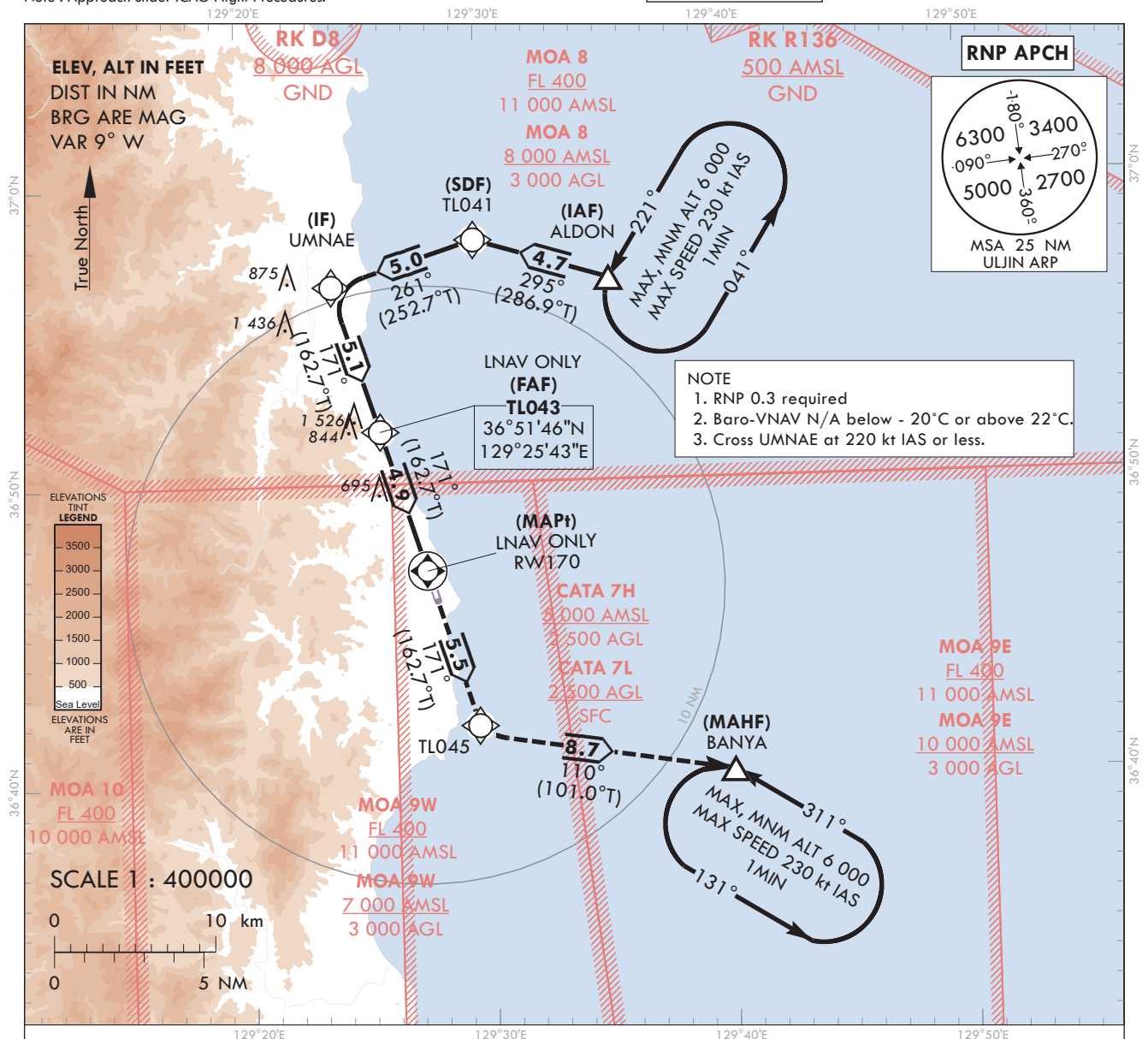
Note : Approach under ICAO Flight Procedures.

AERODROME ELEV 175 ft
HEIGHTS RELATED TO
THR RWY 17 - ELEV 175 ft

ULJIN	ARR	120.875
		317.65
ULJIN	TWR	118.55
		317.45

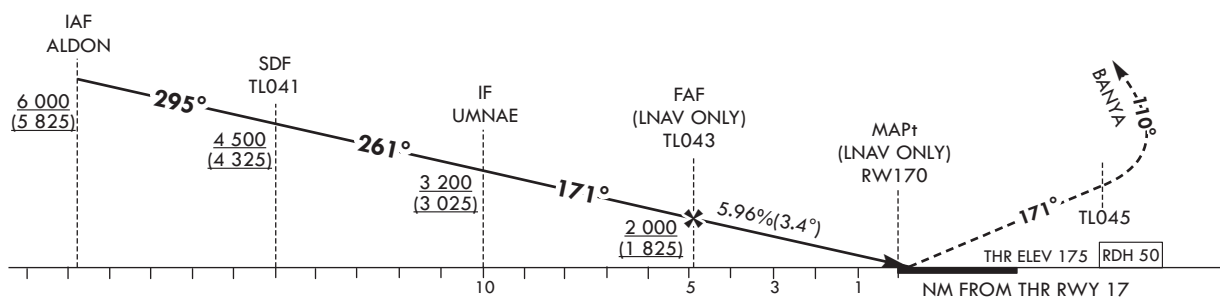
ULJIN/ULjin(RKTL)

RNP RWY 17



MISSED APPROACH

Climb to 6 000 ft on track of 171° to TL045, then turn left on track of 110° to BANYA. Hold as published.



OCA (H)		A	B	C	D							
Straight-in Approach	LNAV/VNAV	720 (545)					Knots	60	90	120	150	180
						Rate of descent	V/V fpm	362	543	724	905	1 087
	LNAV	950 (775)				* Timing NOT authorized for defining the MAPt.						
						* Circling NOT authorized.						

AERONAUTICAL DATA TABULATION

Instrument approach Procedure Coding Tables

RNP RWY 17 - via ALDON(IAF) to BANYA(MAHF)												
Serial Number	Path Descriptor	Waypoint Identifier	Fly-over	Course/Track °M(T)	Distance (NM)	Turn direction	Altitude (ft)	Speed (kt)	Coordinates	VPA/TCH	Navigation specification	Remarks
001	IF	ALDON	-	-	-	-	+6 000	-	36°56'46.3"N 129°35'23.0"E	-	RNP APCH	IAF
002	TF	TL041	-	295(286.8)	4.7	-	+4 500	-	36°58'07.9"N 129°29'46.5"E	-	RNP APCH	SDF
003	TF	UMNAE	-	261(252.7)	5.0	-	+3 200	-220	36°56'38.6"N 129°23'49.1"E	-	RNP APCH	IF
004	TF	TL043	-	171(162.7)	5.1	-	+2 000	-	36°51'46.1"N 129°25'42.7"E	-	RNP APCH	FAF
005	TF	RW170	Y	171(162.7)	4.9	-	+950	-	36°47'05.09"N 129°27'31.62"E	-3.41/50	RNP APCH	MAPt
006	TF	TL045	-	171(162.7)	5.5	-	-	-	36°41'52.3"N 129°29'32.6"E	-	RNP APCH	-
007	TF	BANYA	-	110(101.0)	8.7	-	@6 000	-	36°40'12.4"N 129°40'05.8"E	-	RNP APCH	-
008	HM	BANYA	-	311(302.0)	-	L	@6 000	-230	36°40'12.4"N 129°40'05.8"E	-	RNP APCH	1 MIN (outbound timing)

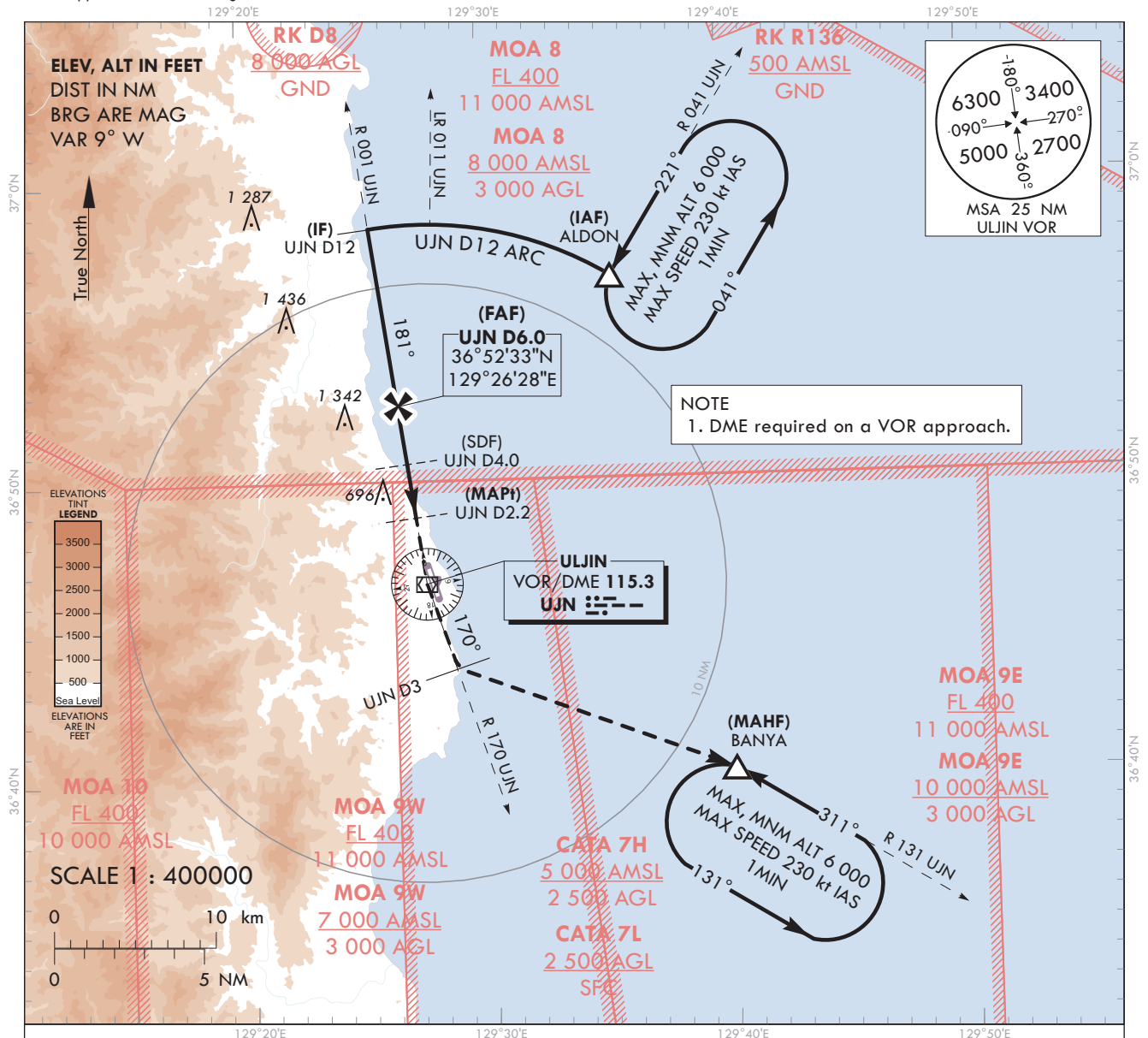
HOLDING PROCEDURE

Holding Identification	Path Descriptor	Waypoint Identifier	Fly-over	Course/Track over M(T)	Time (min)	Turn direction	Altitude (ft)	Speed (kt)	Coordinates	VPA/TCH	Navigation specification	Remarks
RNP RWY 17	HM	ALDON	Y	221(182.0)	1.0	L	@6 000	-230	36°56'46.3"N 129°35'23.0"E	-	RNAV 1	-

Change : Information of resolution for THR coordinates.

VOR RWY 17

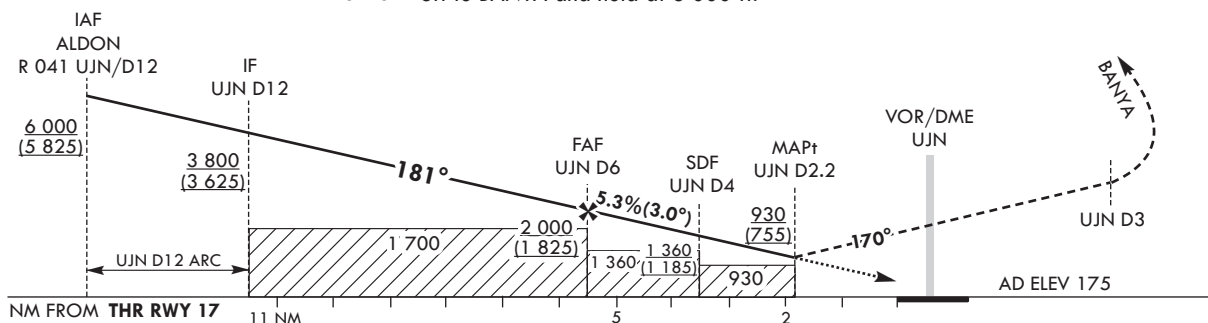
ULJIN	ARR	120.875
		317.65
ULJIN	TWR	118.55
		317.45



TRANSITION ALT	14 000
TRANSITION LVL	FL 140

RECOMMENDED PROFILE(LOC ONLY)	DME UJN	5	4	3	2.5
Final Approach Gradient 5.31%, 323 ft/NM	ALT(HGT)	1 677 (1 502)	1 354 (1 179)	1 032 (856)	870 (695)

Climb on R 001 UJN to UJN and R 170 UJN to 3 DME,
then turn left to BANYA and hold at 6 000 ft.



						Knots	60	90	120	150	180
OCA (H)	A	B	C	D	Rate of descent	V/V fpm	323	484	646	807	968
Straight-in Approach	930 (755)				* Timing NOT authorized for defining the MAPt.						
					* Circling not authorized.						

ULJIN/Uijin(RKTL)
VOR RWY 17

AERONAUTICAL DATA TABULATION

VOR Approach to RWY 17 from ALDON(IAF)		
	Fix/Point	Coordinates
ALDON(IAF)	R 041 UJN / 12.00 NM UJN	36°56'46.3"N 129°35'23.0"E
D12.0 UJN(IF)	BRG 181.00° / 12.00 NM UJN	36°58'29.8"N 129°25'28.5"E
D6.0 UJN(FAF)	BRG 181.00° / 6.00 NM UJN	36°52'32.5"N 129°26'27.8"E
D4.0 UJN(SDF)	BRG 181.00° / 4.00 NM UJN	36°50'33.4"N 129°26'47.5"E
D2.2 UJN(MAPt)	BRG 181.00° / 2.20 NM UJN	36°48'46.2"N 129°27'05.3"E
THR RWY 17	Final approach descent angle (LOC ONLY) 3.01°(FAF-SDF) / 3.06°(SDF-THR)	36°47'05.09"N 129°27'31.62"E
UJN VOR/DME		36°46'35.2"N 129°27'26.9"E
D3 UJN	R 170 UJN/ 3.00 NM UJN	36°43'44.3"N 129°28'38.3"E
BANYA	R 131 UJN/ 12.00 NM UJN	36°40'12.4"N 129°40'05.8"E

Change : Information of resolution for THR coordinates.

INSTRUMENT
APPROACH
CHART - ICAO

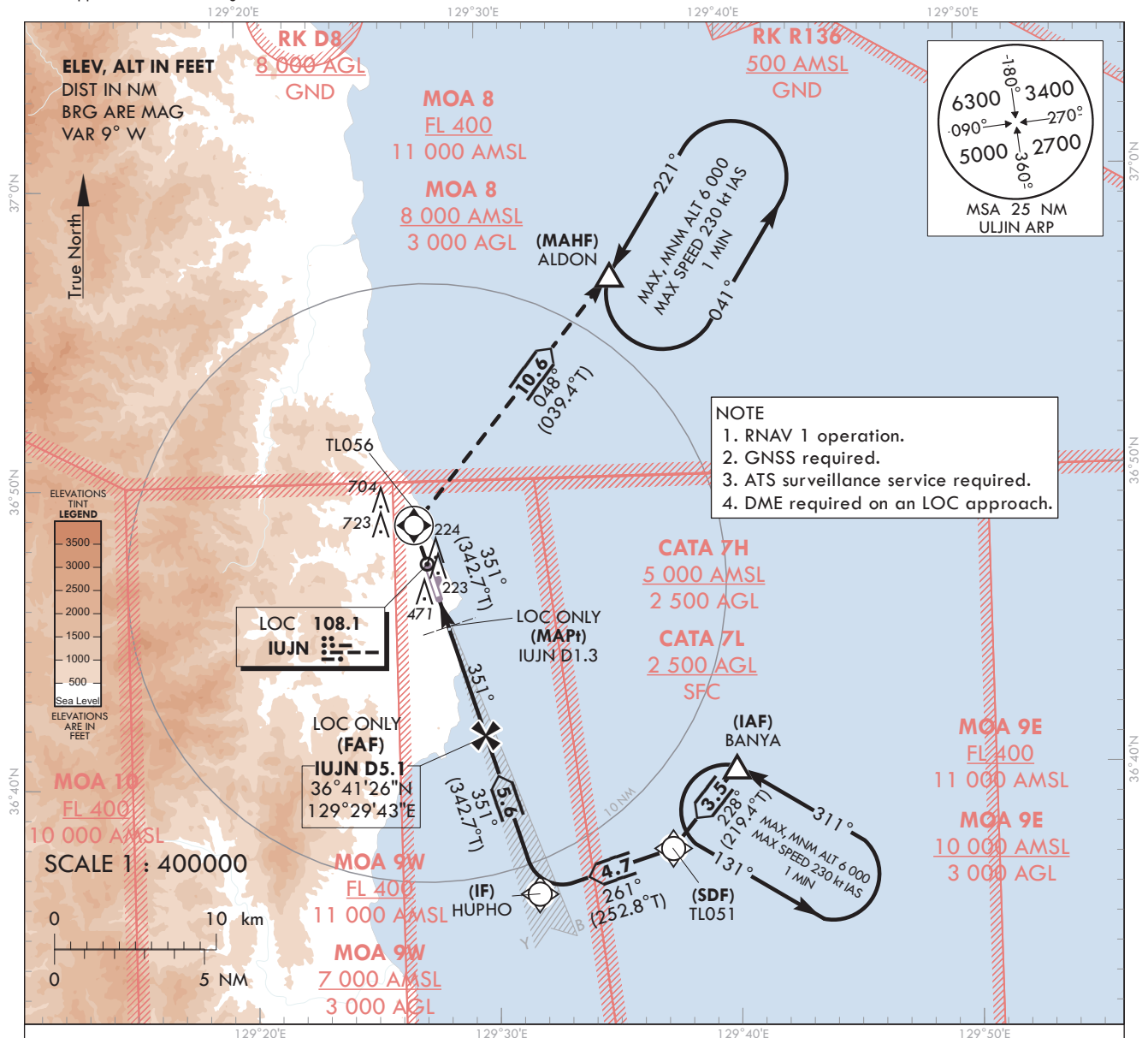
Note : Approach under ICAO Flight Procedures.

AERODROME ELEV 175 ft
HEIGHTS RELATED TO
THR RWY 35 - ELEV 158 ft

ULJIN	ARR	120.875
		317.65
ULJIN	TWR	118.55
		317.45

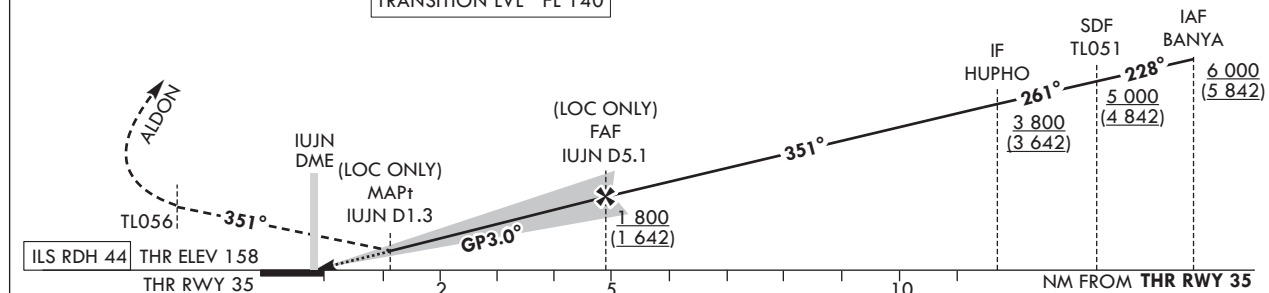
ULJIN/ULjin(RKTL)

ILS Z or LOC Z RWY 35



RECOMMENDED PROFILE(LOC ONLY)	DME IUJN	5	4	3	2	1.3
Final Approach Gradient 5.31%, 323 ft/NM	ALT(HGT)	1 778 (1 620)	1 455 (1 297)	1 133 (975)	810 (652)	584 (426)

MISSED APPROACH

Climb straight ahead until TL056,
then turn right on track of 048° to ALDON
and hold at 6 000 ft.TRANSITION ALT 14 000
TRANSITION LVL FL 140

OCA (H)		A	B	C	D		
Straight-in Approach	CAT-I (CG 2.5%)	580 (422)					
	CAT-I (CG 4.0%)	370 (212)					
	LOC	590 (432)					
	Rate of descent						
		Knots	60	90	120	150	180
		V/V fpm	318	478	637	796	955
		* Timing NOT authorized for defining the MAPt.					
		* Circling not authorized.					

ULJIN/Uljin(RKTL)
ILS Z or LOC Z RWY 35

AERONAUTICAL DATA TABULATION

ILS Z / LOC Z Approach to RWY 35 from BANYA(IAF)		
	Fix/Point	Coordinates
BANYA(IAF)	R 131 UJN/12.00 NM UJN	36°40'12.4"N 129°40'05.8"E
TL051(SDF)	BRG 351.29°	36°37'30.8"N 129°37'21.1"E
HUPHO(IF)	BRG 351.28°/10.65 NM UJN	36°36'07.0"N 129°31'45.8"E
D5.1 IUJN (FAF LOC Only)	BRG 351.28°/5.08 NM IUJN	36°41'26.4"N 129°29'42.5"E
D1.3 IUJN (MAPt LOC Only)	BRG 351.29°/1.30 NM IUJN	36°45'03.3"N 129°28'18.7"E
THR RWY 35	Final approach descent angle 3.04°(LOC ONLY)	36°46'09.33"N 129°27'53.20"E
TL056		36°48'33.0"N 129°26'57.6"E
ALDON	R 041 UJN/12.00 NM UJN	36°56'46.3"N 129°35'23.0"E

Change : Information of resolution for THR coordinates.

ILS Y or LOC Y RWY 35

Climb straight ahead until UJN D2, then turn right to ALDON and hold at 6 000 ft.

TRANSITION LVL FL 140

ILS RDH 44

THR ELEV 158

THR RWY 35

VOR/DME UJUN

DME (LOC ONLY) UJUN D1.3

MAPt

FAF UJUN D5.1

IF UJUN D11.6

IAF BANYA R 131 UJUN /D12

6 000 (5 842)

351°

GP3.0°

1 800 (1 642)

3 800 (3 642)

UJUN D2

UJUN D12 ARC

NM FROM THR RWY 35

OCA (H)		A	B	C	D							
Straight-in Approach	CAT-I (CG 2.5%)	545 (387)					Knots	60	90	120	150	180
	CAT-I (CG 4.0%)	358 (200)				Rate of descent	V/V fpm	318	478	637	795	955
	LOC	590 (432)				* Timing NOT authorized for defining the MAPt. * Circling not authorized.						

ULJIN/Uijin(RKTL)
ILS Y or LOC Y RWY 35

AERONAUTICAL DATA TABULATION

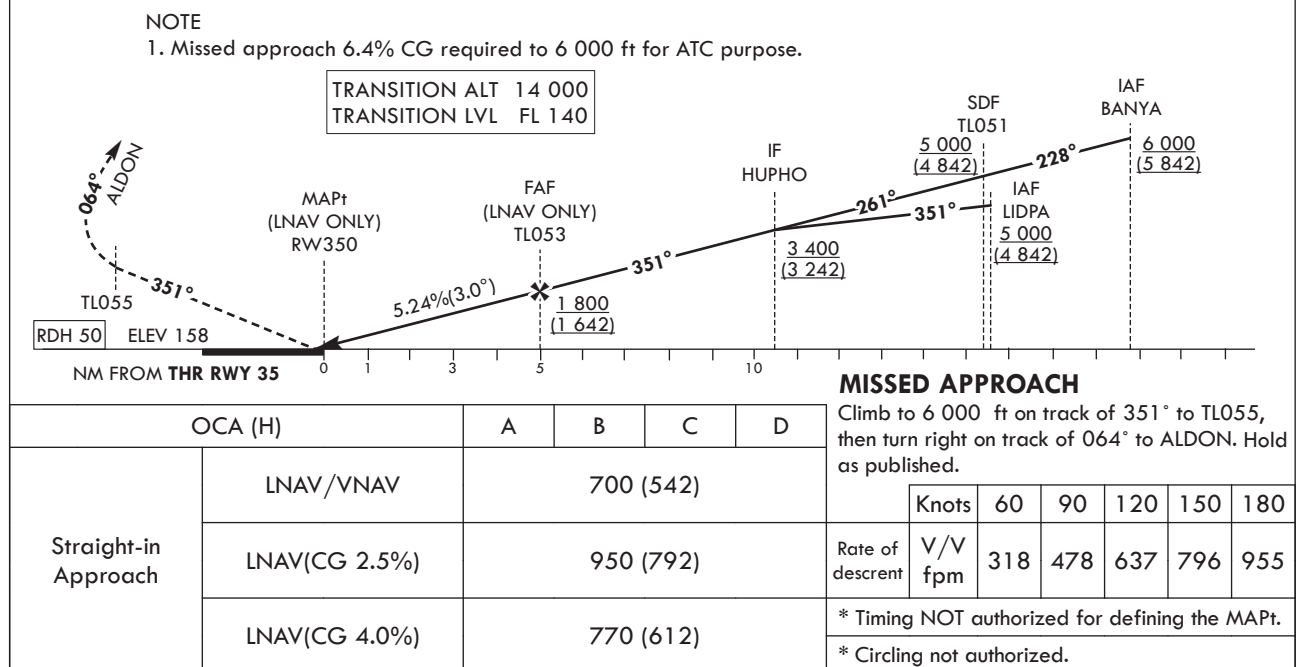
ILS Y / LOC Y Approach to RWY 35 from BANYA(IAF)		
	Fix/Point	Coordinates
BANYA(IAF)	R 131 UJN/12.00 NM UJN	36°40'12.4"N 129°40'05.8"E
D11.6 IUJN(IF)	BRG 350.99°/11.63 NM IUJN	36°35'10.6"N 129°32'07.5"E
D5.1 IUJN(FAF LOC Only)	BRG 351.28°/5.08 NM IUJN	36°41'26.4"N 129°29'42.5"E
D1.3 IUJN(MAPt LOC Only)	BRG 351.29°/1.30 NM IUJN	36°45'03.3"N 129°28'18.7"E
THR RWY 35	Final approach descent angle 3.05°(LOC ONLY)	36°46'09.33"N 129°27'53.20"E
UJN VOR/DME		36°46'35.2"N 129°27'26.9"E
D2 UJN	R 357 UJN/2.00 NM UJN	36°48'33.0"N 129°26'57.6"E
ALDON	R 041 UJN/12.00 NM UJN	36°56'46.3"N 129°35'23.0"E

Change : Information of resolution for THR coordinates.

AERODROME ELEV 175 ft
HEIGHTS RELATED TO
THR RWY 35 - ELEV **158 ft**

ULJIN	ARR	120.875
		317.65
ULJIN	TWR	118.55
		317.45

RNP RWY 35



AERONAUTICAL DATA TABULATION

Instrument approach Procedure Coding Tables

RNP RWY 35 - via BANYA(IAF) to ALDON(IAF)										
Serial Number	Path Descriptor	Waypoint Identifier	Fly-over	Course/Track over (°/T)	Distance (NM)	Turn direction	Altitude (ft)	Speed (kt)	Coordinates	VPA/TCH
001	IF	BANYA	-	-	-	-	+6 000	-	36°40'12.4"N 129°40'05.8"E	-
002	TF	TL051	-	228(219.3)	3.5	-	+5 000	-	36°37'30.8"N 129°37'21.1"E	-
003	TF	HUPHO	-	261(252.7)	4.7	-	+3 400	-	36°36'07.0"N 129°31'45.8"E	-
004	TF	TL053	-	351(342.7)	5.5	-	+1 800	-	36°41'22.5"N 129°29'44.1"E	-
005	TF	RW350	Y	351(342.7)	5.0	-	+950	-	36°46'09.33"N 129°27'53.20"E	-3.00/50
006	TF	TL055	-	351(342.7)	5.5	-	-	-	36°51'25.4"N 129°25'50.7"E	-
007	TF	ALDON	-	064(055.1)	9.3	-	@6 000	-	36°56'46.3"N 129°35'23.0"E	-
008	HM	ALDON	Y	221(182.0)	-	L	@6 000	-230	36°56'46.3"N 129°35'23.0"E	-
009	HM	BANYA	Y	311(302.0)	-	L	@6 000	-230	36°40'12.4"N 129°40'05.8"E	-
										Remarks
										IAF
										SDF
										IF
										FAF
										MAPt
										-
										-
										1 min (outbound timing)
										1 min (outbound timing)

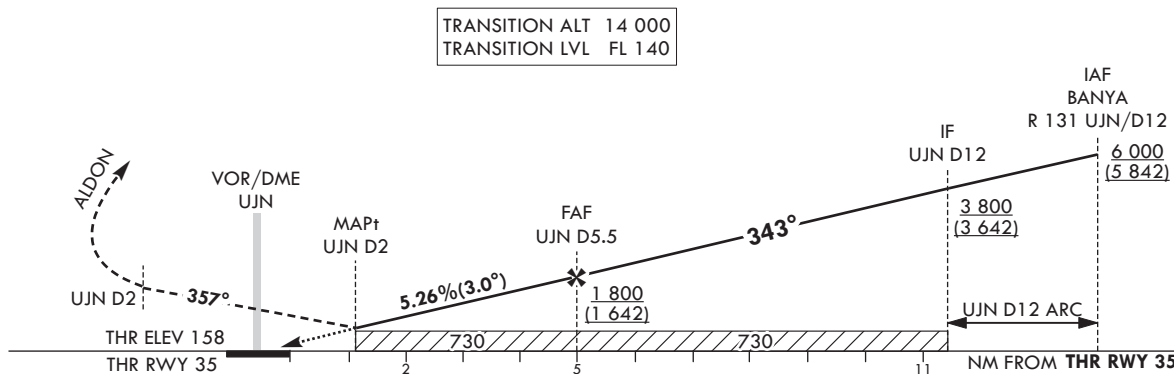
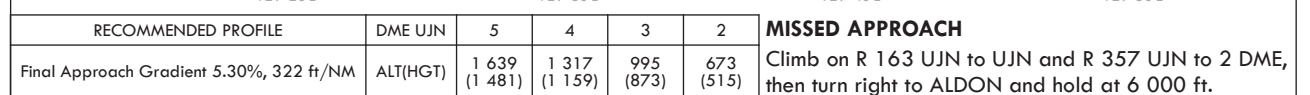
RNP RWY 35 - via LIDPA(IAF) to ALDON(IAF)										
Serial Number	Path Descriptor	Waypoint Identifier	Fly-over	Course/Track over (°/T)	Distance (NM)	Turn direction	Altitude (ft)	Speed (kt)	Coordinates	VPA/TCH
001	IF	LIDPA	-	-	-	-	+5 000	-	36°31'13.6"N 129°33'38.6"E	-
002	TF	HUPHO	-	351(342.7)	5.1	-	+3 400	-	36°36'07.0"N 129°31'45.8"E	-
003	TF	TL053	-	351(342.7)	5.5	-	+1 800	-	36°41'22.5"N 129°29'44.1"E	-
004	TF	RW350	Y	351(342.7)	5.0	-	+950	-	36°46'09.33"N 129°27'53.20"E	-3.00/50
005	TF	TL055	-	351(342.7)	5.5	-	-	-	36°51'25.4"N 129°25'50.7"E	-
006	TF	ALDON	Y	064(055.1)	9.3	-	@6 000	-	36°56'46.3"N 129°35'23.0"E	-
007	HM	ALDON	Y	221(182.0)	-	L	@6 000	-230	36°56'46.3"N 129°35'23.0"E	-
										Remarks
										IAF
										IF
										FAF
										MAPt
										-
										1 min (outbound timing)
										1 min (outbound timing)

Change : Information of resolution for THR coordinates.

AERODROME ELEV 175 ft
HEIGHTS RELATED TO AD ELEV

ULJIN	ARR	120.875
		317.65
ULJIN	TWR	118.55
		317.45

VOR RWY 35



					Knots	60	90	120	150	180
OCA (H)	A	B	C	D	Rate of descent V/V fpm	322	483	644	805	966
Straight-in Approach	730 (572)				* Timing NOT authorized for defining the MAPt.					
					* Circling NOT authorized.					

ULJIN/Uljin(RCTL)
VOR RWY 35

AERONAUTICAL DATA TABULATION

VOR Approach to RWY 35 from BANYA(IAF)		
	Fix/Point	Coordinates
BANYA(IAF)	R 131 UJN / 12.00 NM UJN	36°40'12.4"N 129°40'05.8"E
D12.0 UJN(IF)	BRG 343.00° / 12.00 NM UJN	36°35'44.7"N 129°33'52.9"E
D5.5 UJN(FAF)	BRG 343.00°/5.50 NM UJN	36°41'37.1"N 129°30'24.1"E
D2.0 UJN(MAPt)	BRG 343.00°/2.00 NM UJN	36°44'46.8"N 129°28'31.4"E
THR RWY 35	Final approach descent angle 3.04°	36°46'09.33"N 129°27'53.20"E
UJN VOR/DME		36°46'35.2"N 129°27'26.9"E
D2 UJN	R 357 UJN/2.00 NM UJN	36°48'32.9"N 129°26'56.9"E
ALDON	R 041 UJN/12.00 NM UJN	36°56'46.3"N 129°35'23.0"E

Change : Information of resolution for THR coordinates.